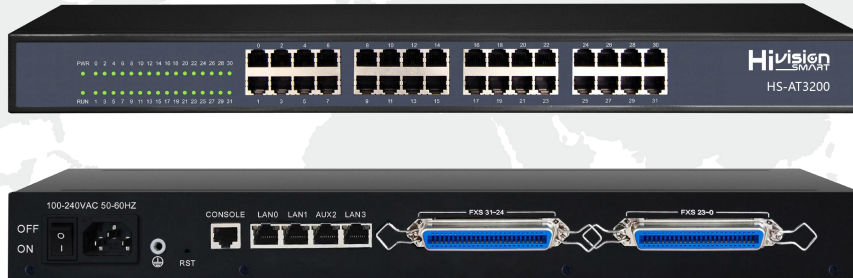


HS-AT3200

FXS Analog VoIP Gateway



Key Features:

- Cost effective gateway with 32 FXS ports
- Fax over IP (T.38 and Pass-Through)
- Support IPv4 and IPv6
- TR069 and SNMP
- Multiple codecs: G.711A/U, G.723.1, G.729A/B, AMR, G.726 etc.
- Fully compatible with leading IMS/NGN, SIP based IP telephony system

Overview

HS-AT3200 is a multi-functional analog gateway offering seamless connectivity between IP based telephony networks and legacy telephones (POTS), fax machines and PBX systems. With the standard RJ11 and RJ21 interfaces, the device offers 32 FXS ports. It is ideally suited for small and medium businesses, call centers and multi-location environments that need VoIP services. HS-AT3200 supports the standard SIP protocol and it's compatible with leading IMS/NGN platforms and SIP-based IP telephony systems.

Physical Interfaces

Capacity

32 FXS with RJ11

2*RJ21, 50 PIN

Ethernet Interfaces:

3* LAN, 10/100Mbps, RJ-45

Console:

1*RS232, 115200bps

Voice & FAX

G.711A/U law, G.723.1, G.729 A/B,

G.726, AMR, iLBC

Silence Suppression

Comfort Noise Generation(CNG)

Voice Activity Detection(VAD)

Echo Cancellation(G.168), with up to
128ms

Adaptive (Dynamic) Jitter Buffer

Hook Flash

Programmable Gain Control

T.38/Pass-through

High speed fax up to 14.4kbps

Modem/POS

DTMF mode:

Signal/RFC2833/INBAND

VLAN 802.1P/802.1Q

(data/voice/management VLANs)

Layer3 QoS and DiffServ

Supplement Service

Call Waiting

Blind Transfer

Attend Transfer

Call Forward on Busy

Call Forward on No Reply

Unconditional Call Forward

Warm/Immediately Hotline

Call Hold

Do-not-disturb

3-Way Conference

Message Waiting Indicator

Speed Dial

FXS

Connector: RJ11 and RJ21

Dial Mode: DTMF and Pulse

Pulse: 10 and 20 PPS

Caller ID: DTMF/FSK CLI Presentation

Max Cable Length: 5 km

Reversed Polarity

Programmable Call Progress Tone

Software Features

Hunting Group

Web ACL

Telnet ACL

Action URL

PPPoE/IPv4/IPv6

OpenVPN

Digitmap

Routing Rules based Prefixes

Caller/Called Number Manipulation

Maintenance

SNMP v1/v2/v3

TR069, TR181

Auto Provisioning

Web/Telnet

Configuration Backup/Restore

Firmware Upgrade via Web

CDR

Syslog(Emerg,alert, critical,error
warning,notice,info, debug)

Ping/Tracert Test

Network Capture

Outward Test(GR909)

NTP/Daylight Saving Time

IVR local Maintenance

Cloud-based Management

VoIP**Protocol:**

SIP v2.0 (UDP/TCP),RFC3261

SDP,RTP(RFC2833), RFC3262,

3263,3264,3265,3515,2976,3311

SIP TLS/SRTP

RTP/RTCP, RFC2198, 1889

RFC4028 Session Timer

RFC3266 IPv6 in SDP

RFC2806 TEL URI

RFC3581 NAT,rport

Primary/backup SIP server

Outbound Proxy

DNS SRV/ A Query/NATPR Query

SIP Trunk

Early Media/Early Answer

NAT:STUN, Static/Dynamic NAT

Environmental

Power Supply: 100-240VAC, 50-60
Hz

Power Consumption:40W(Typical)

Operating Temperature:0 °C ~ 45 °C

Storage Temperature: -20 °C ~80 °C

Humidity:10%-90% Non-Condensing

Dimensions(W/D/H): 440*250*44mm

Unit Weight: 3.2kg

Compliance: CE, FCC